



NAGAR PANCHAYAT AMDI, CHHATTISGARH



Ministry of Housing and Urban Affairs
Government of India

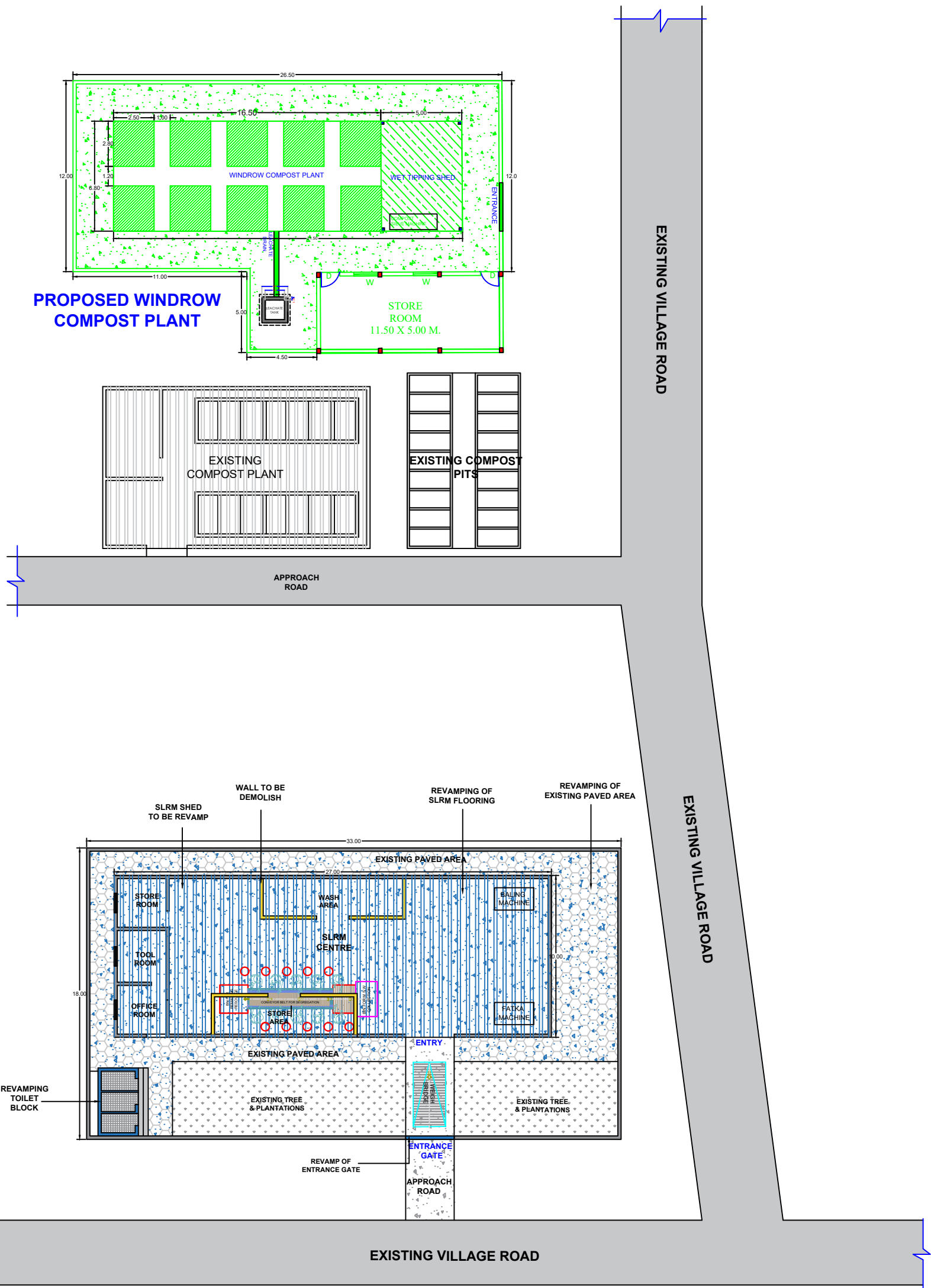


VOL - III Swachh Bharat Mission-Urban 2.0



NAGAR PANCHAYAT REPORT UNDER SBM 2.0 FOR SWM, NAGAR PANCHAYAT AMDI, CHHATTISGARH

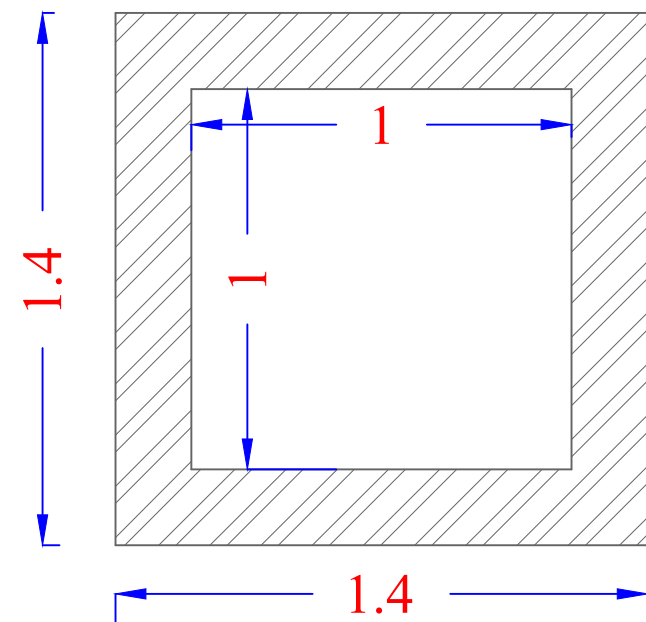
SLRM CENTRE AT
PT. NARAYAN MEGHAWALE,
WARD NO - 15



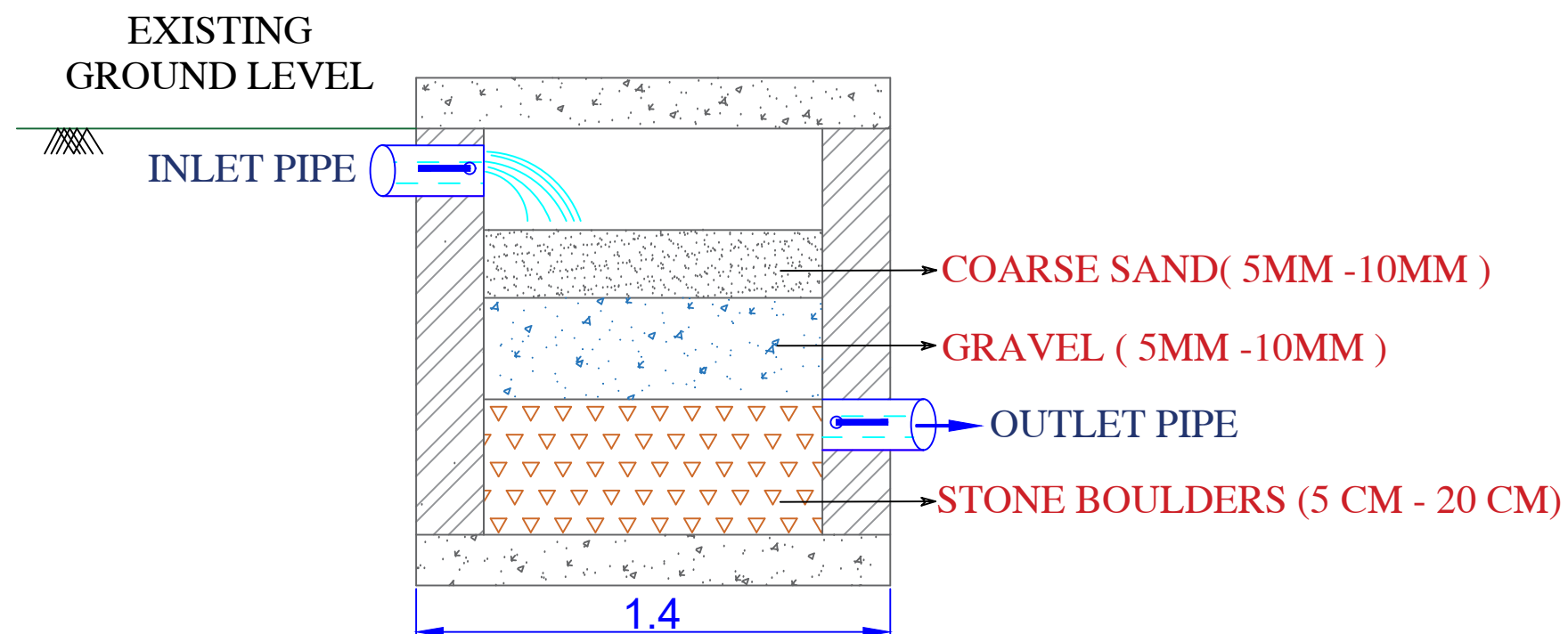
SITE PLAN

PILLIWAR & ASSOCIATES			
SITE PLAN	ENGINEERS, ARCHITECTS, PLANNERS, GIS-CONSULTANTS & REGD. VALUERS. 25-SOUTH AVENUE, CHOUBEY COLONY, RAIPUR (C.G.) PHONE No. - 0771-2255748, 4036748 CELL No. 0-94252-09760 E-MAIL: manishpiliwar@yahoo.com		
	NOTE	DWG PATH	
ALL DIM. ARE IN M.	CLIENT	NAGAR PANCHAYAT, AMDI (C.G.)	
REVISION	PROJECT	MUNICIPAL SOLID WASTE MANAGEMENT, UNDER 2.0	
DESIGNED BY	DRAWN BY	CHECKED BY	DATE
MANISH PILLIWAR	NITISH DEWANGAN	MANISH PILLIWAR	12/02/2026

"SITE PLAN OF PROPOSED WINDROW COMPIST PLANT & EXISTING SLRM CENTRE " AT NAGAR PANCHAYAT AMDI, DHAMTARI (C.G.)



PLAN OF RAIN WATER HARVESTING

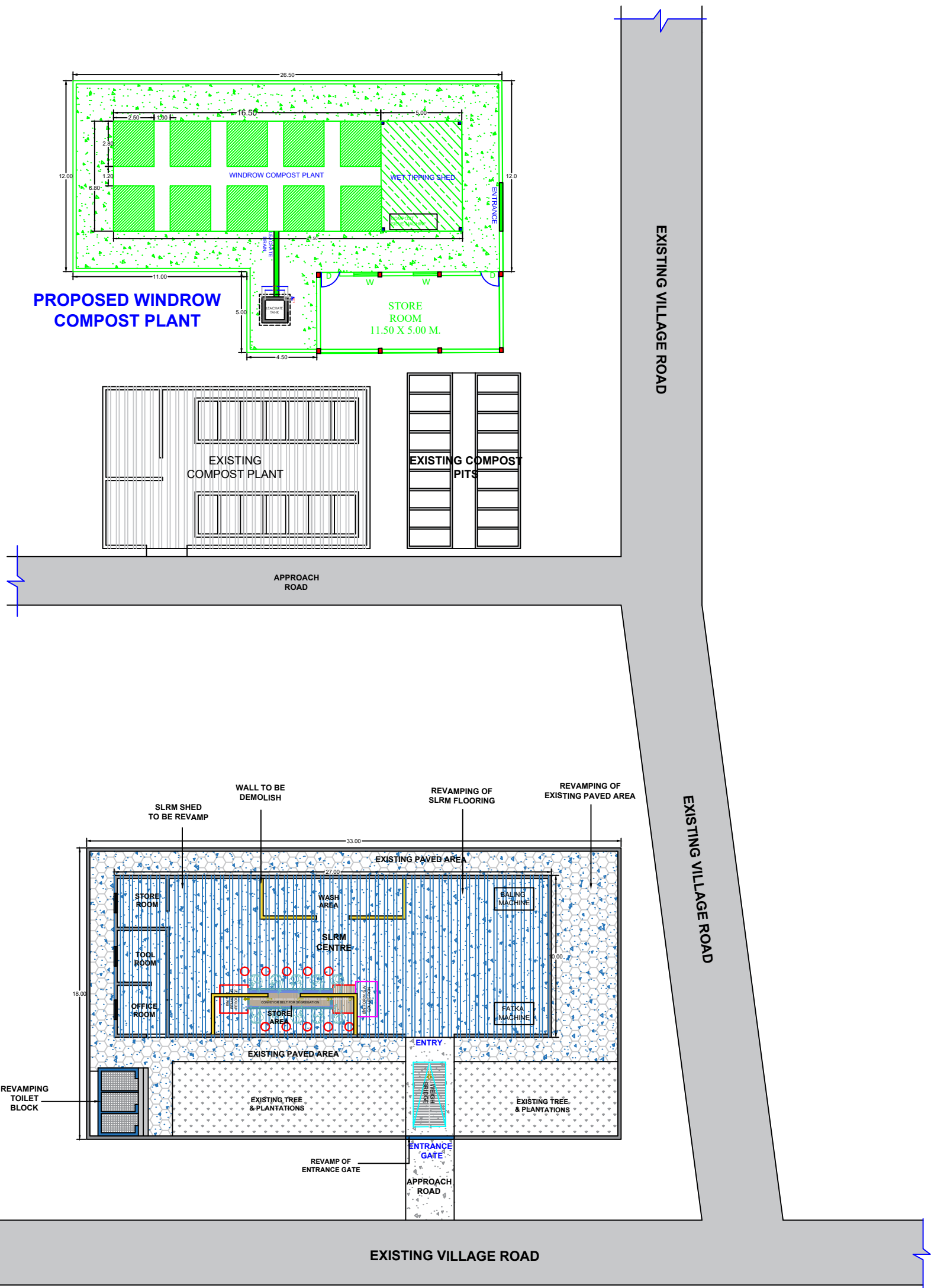


SECTION OF RAIN WATER HARVESTING

**"SITE PLAN OF PROPOSED
WINDROW COMPIST PLANT & EXISTING SLRM CENTRE "
AT NAGAR PANCHAYAT AMDI, DHAMTARI (C.G.)**

LEACHATE TANK	PILLIWAR & ASSOCIATES ENGINEERS, ARCHITECTS, PLANNERS, GIS-CONSULTANTS & REGD. VALUERS. 25-SOUTH AVENUE, CHOUBEY COLONY, RAIPUR (C.G.) PHONE No. - 0771-2255748, 4036748 CELL No. 0-94252-09760 E-MAIL: manishpilliwar@yahoo.com			
	NOTE ALL DIM. ARE IN M.	DWG PATH		
	CLIENT	NAGAR PANCHAYAT, AMDI (C.G.)		
REVISION	PROJECT	MUNICIPAL SOLID WASTE MANAGEMENT, UNDER 2.0		
DESIGNED BY		DRAWN BY	CHECKED BY	DATE
MANISH PILLIWAR		NITISH DEWANGAN	MANISH PILLIWAR	13/02/2026

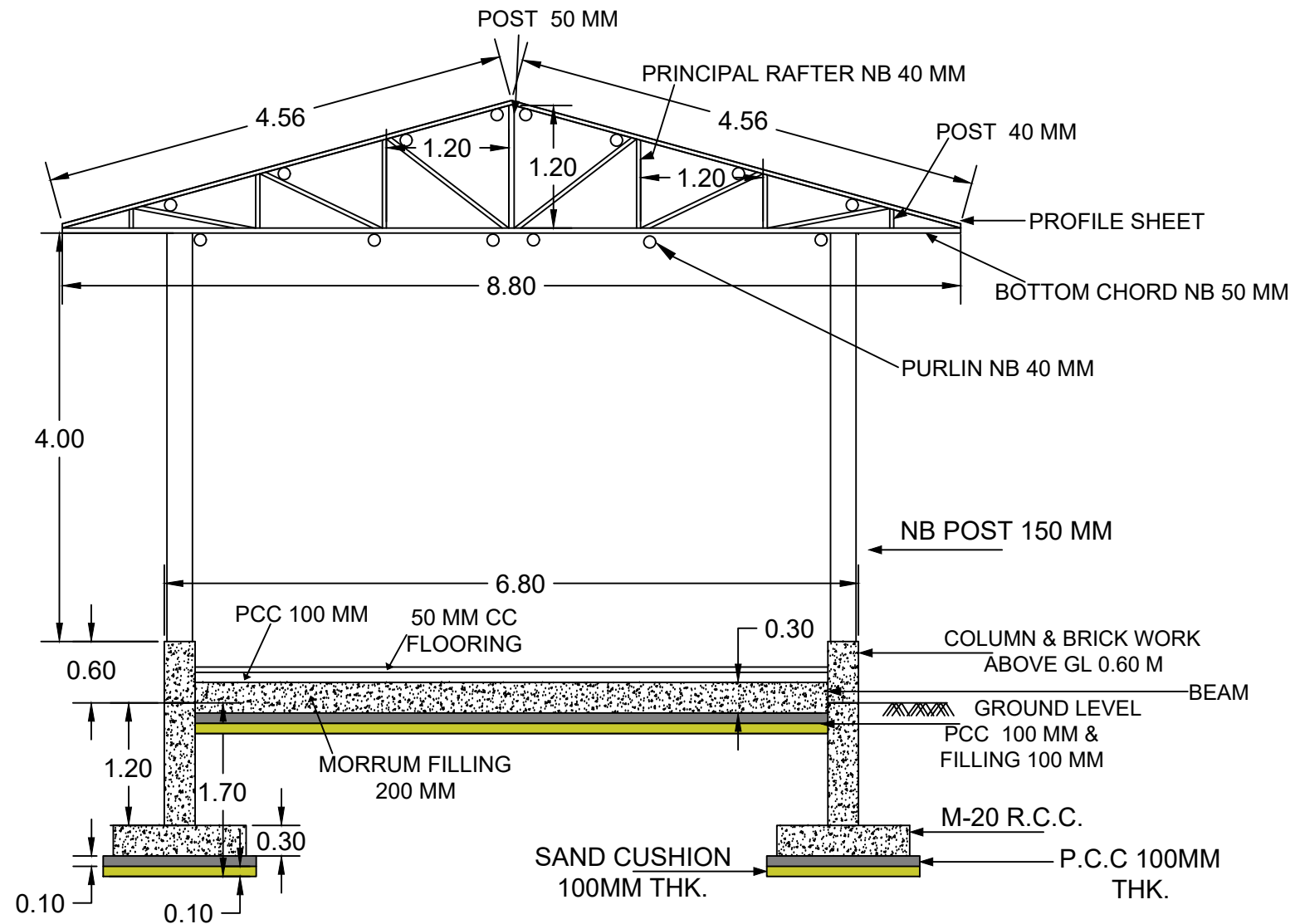
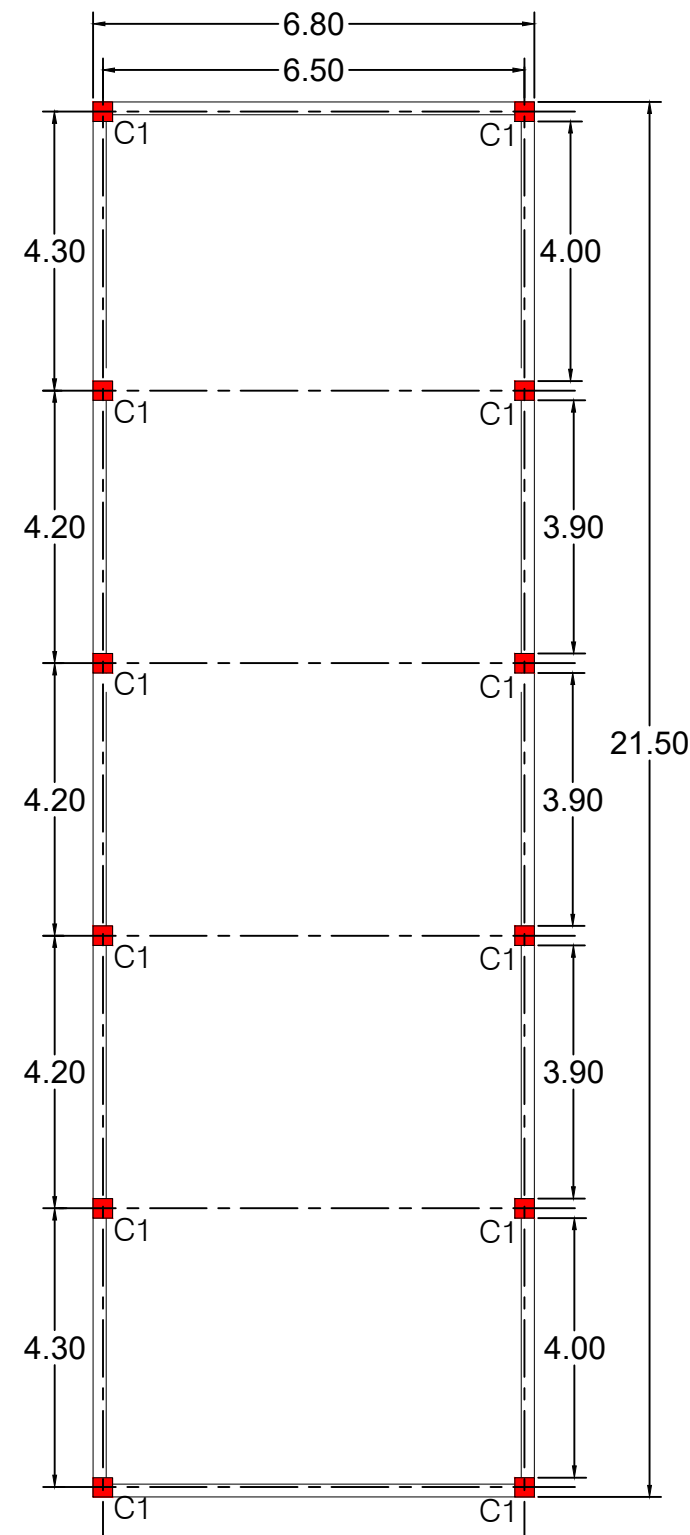
WINDROW COMPOST PLANT AT
PT. NARAYAN MEGHAWALE,
WARD NO - 15



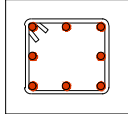
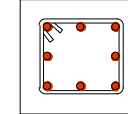
SITE PLAN

PILLIWAR & ASSOCIATES			
SITE PLAN	ENGINEERS, ARCHITECTS, PLANNERS, GIS-CONSULTANTS & REGD. VALUERS. 25-SOUTH AVENUE, CHOUBEY COLONY, RAIPUR (C.G.) PHONE No. - 0771-2255748, 4036748 CELL No. 0-94252-09760 E-MAIL: manishpiliwar@yahoo.com		
	NOTE	DWG PATH	
ALL DIM. ARE IN M.	CLIENT	NAGAR PANCHAYAT, AMDI (C.G.)	
REVISION	PROJECT	MUNICIPAL SOLID WASTE MANAGEMENT, UNDER 2.0	
DESIGNED BY	DRAWN BY	CHECKED BY	DATE
MANISH PILLIWAR	NITISH DEWANGAN	MANISH PILLIWAR	12/02/2026

"SITE PLAN OF PROPOSED WINDROW COMPIST PLANT & EXISTING SLRM CENTRE " AT NAGAR PANCHAYAT AMDI, DHAMTARI (C.G.)

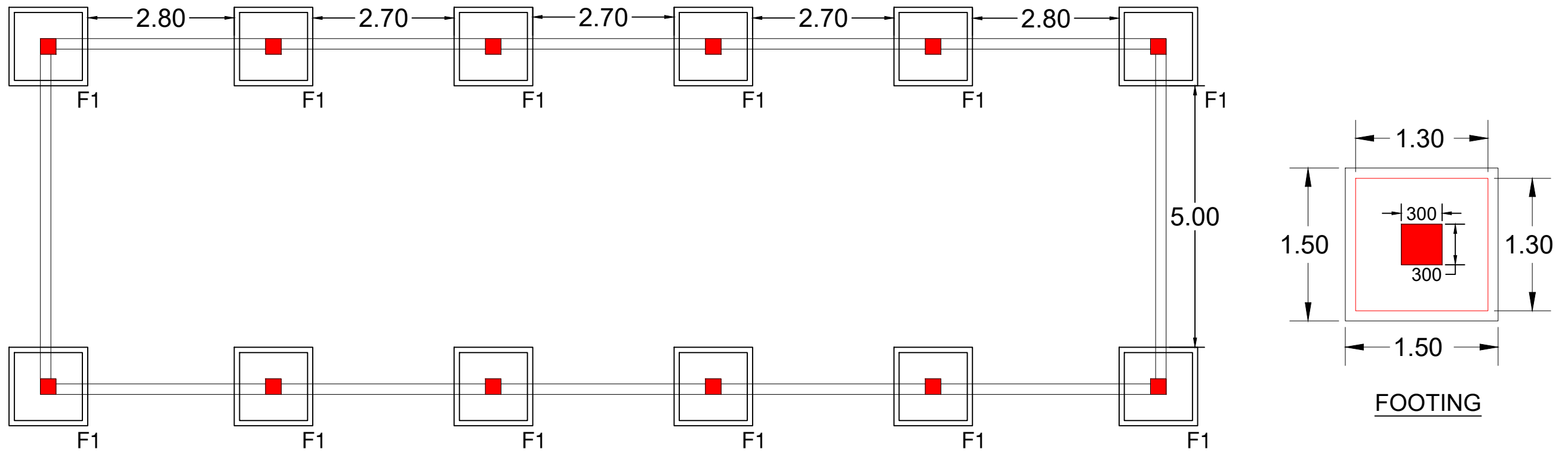


COLUMN DETAILS

COL. TYPE	COLUMN SECTION	
	UPTO PLINTH	ABOVE PLINTH
C1 300X300	 <p>MAIN BARS: 8NOS 12MM#</p> <p>RINGS: 8MM# 150C/C</p>	 <p>MAIN BARS: 8NOS 12MM#</p> <p>RINGS: 8MM# 150C/C</p>

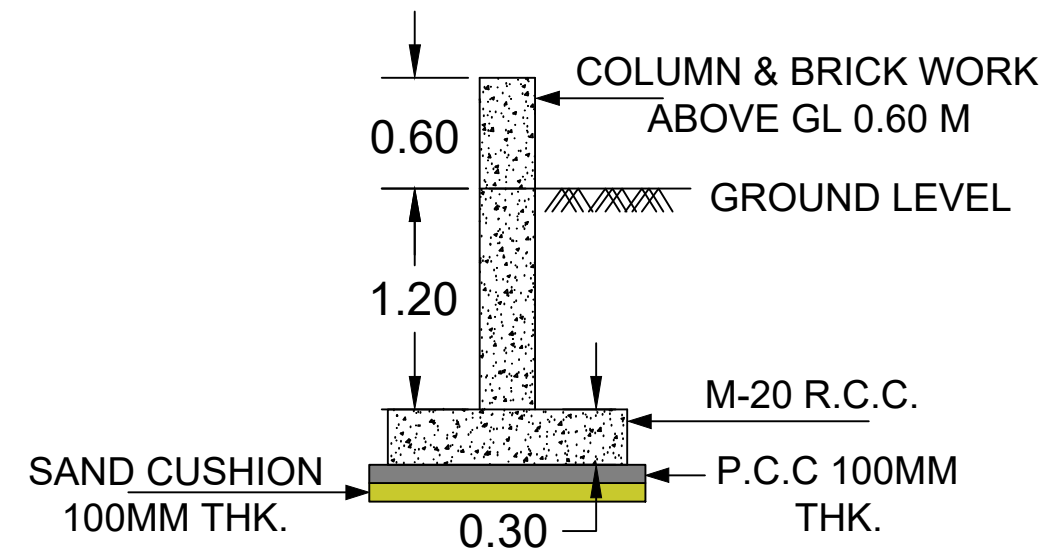
"SITE PLAN OF PROPOSED WINDROW COMPIST PLANT & EXISTING SLRM CENTRE " AT NAGAR PANCHAYAT AMDI, DHAMTARI (C.G.)

WINDROW COMPOST		PILLIWAR & ASSOCIATES ENGINEERS, ARCHITECTS, PLANNERS. GIS-CONSULTANTS & REGD. VALUERS. 25-SOUTH AVENUE, CHOUBEY COLONY, RAIPUR (C.G.) PHONE No. - 0771-2255748, 4036748 CELL No. 0-94252-09760 E-MAIL: manishpiliwar@yahoo.com			
NOTE ALL DIM. ARE IN M.	DWG PATH				
	CLIENT				
REVISION	PROJECT	MUNICIPAL SOLID WASTE MANAGEMENT, UNDER 2.0			
DESIGNED BY		DRAWN BY		CHECKED BY	DATE
MANISH PILLIWAR		NITISH DEWANGAN		MANISH PILLIWAR	13/02/2026



FOOTING DETAILS

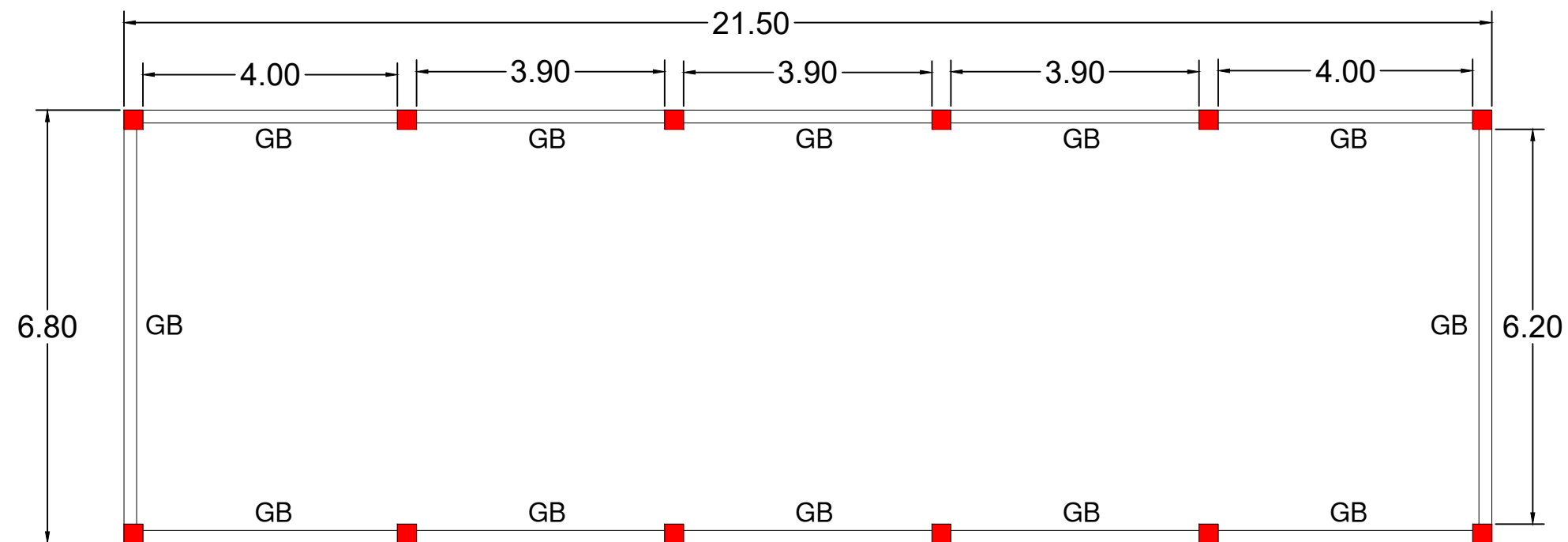
SN	FOOTING NO.	FOOTING DETAILS			REINFORCEMENT DETAILS	
		L	B	D	ALONG B	ALONG L
1	F1	1500	1500	1700	T12@150 C/C	T12@150 C/C



FOOTING DETAILS

**"SITE PLAN OF PROPOSED
WINDROW COMPIST PLANT & EXISTING SLRM CENTRE "
AT NAGAR PANCHAYAT AMDI, DHAMTARI (C.G.)**

PILLIWAR & ASSOCIATES			
NOTE ALL DIM. ARE IN M.	ENGINEERS, ARCHITECTS, PLANNERS, GIS-CONSULTANTS & REGD. VALUERS, 25-SOUTH AVENUE, CHOUBEY COLONY, RAIPUR (C.G.) PHONE No. - 0771-2255748, 4036748 CELL No. 0-94252-09760 E-MAIL: manishpiliwar@yahoo.com		
	DWG PATH		
	CLIENT	NAGAR PANCHAYAT, AMDI (C.G.)	
REVISION	PROJECT	MUNICIPAL SOLID WASTE MANAGEMENT, UNDER 2.0	
DESIGNED BY	DRAWN BY	CHECKED BY	DATE
MANISH PILLIWAR	NITISH DEWANGAN	MANISH PILLIWAR	13/02/2026



GROUND BEAM SCHEDULE (M20:Fe500) (TYPICAL GROUND BEAM DETAILS) SEE FIG.-2

BEAM NUMBERS	SIZE		BOTTOM REINFORCEMENT		TOP REINFORCEMENT			SHEAR STIRRUPS		
	B	D	BOTTOM R/F (THRU.)	BOTTOM R/F EXTRA AT MID SPAN	TOP R/F (THRU.)	TOP EXTRA R/F AT LEFT SUPPORT	TOP EXTRA R/F AT RIGHT SUPPORT	LEFT	MID SPAN	RIGHT
GB	200	300	2-T12	1-T12	2-T12	1-T12	1-T12	2L-T8@150	2L-T8@150	2L-T8@150

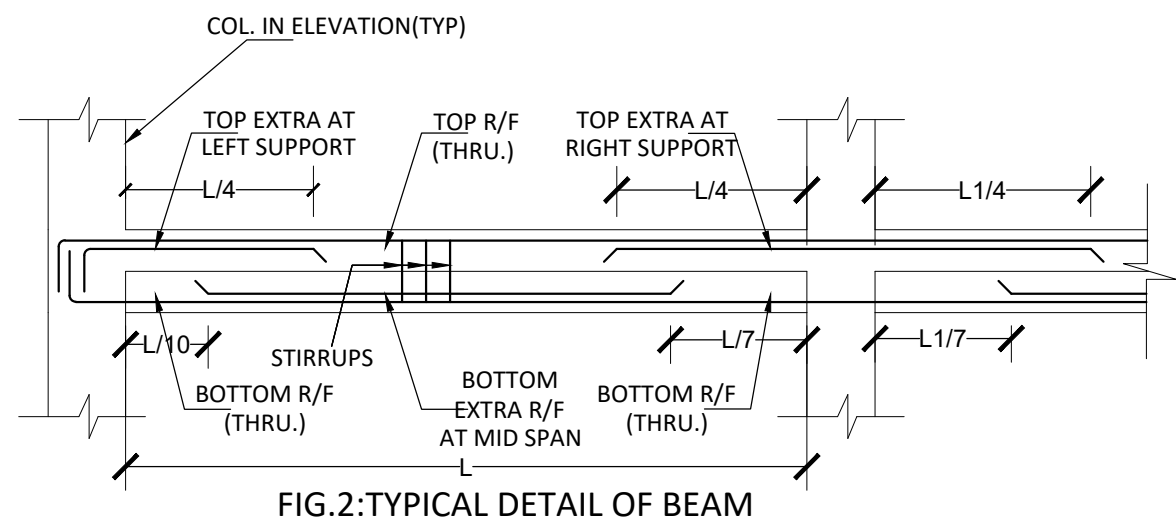
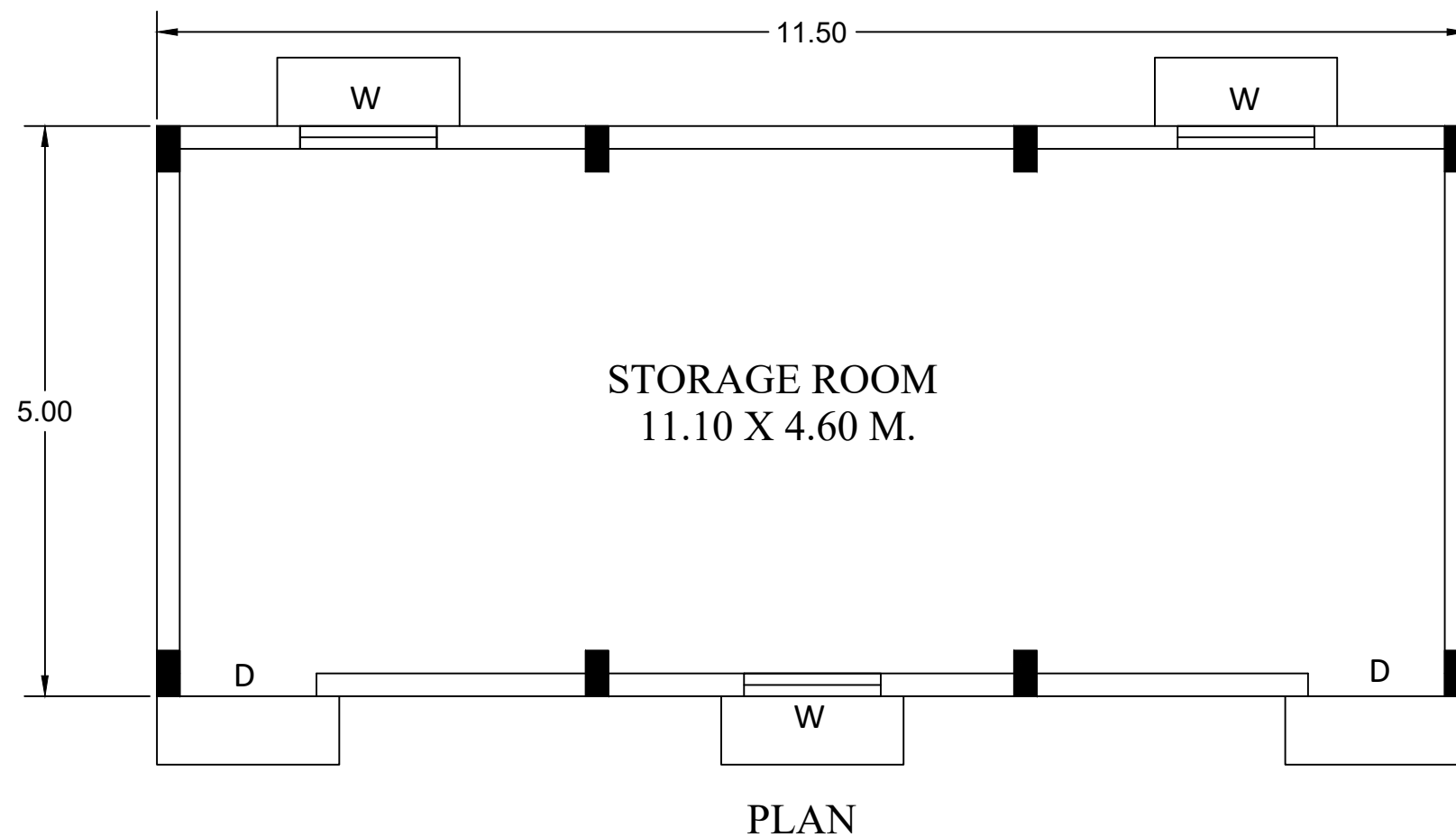
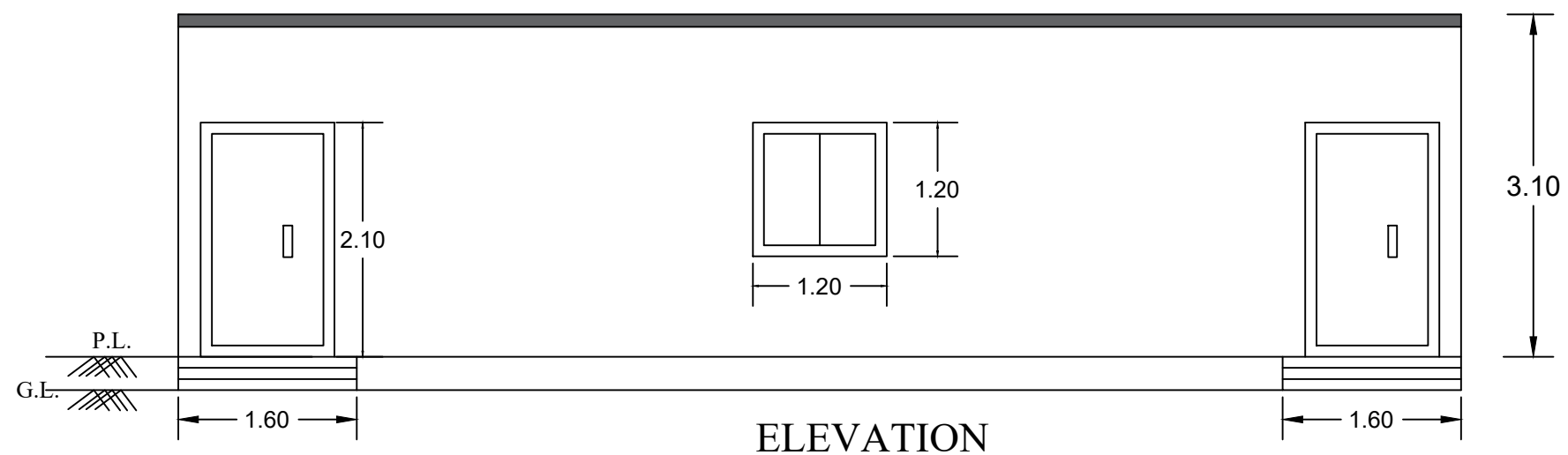


FIG.2:TYPICAL DETAIL OF BEAM

BELOW GROUND BEAM DETAILS

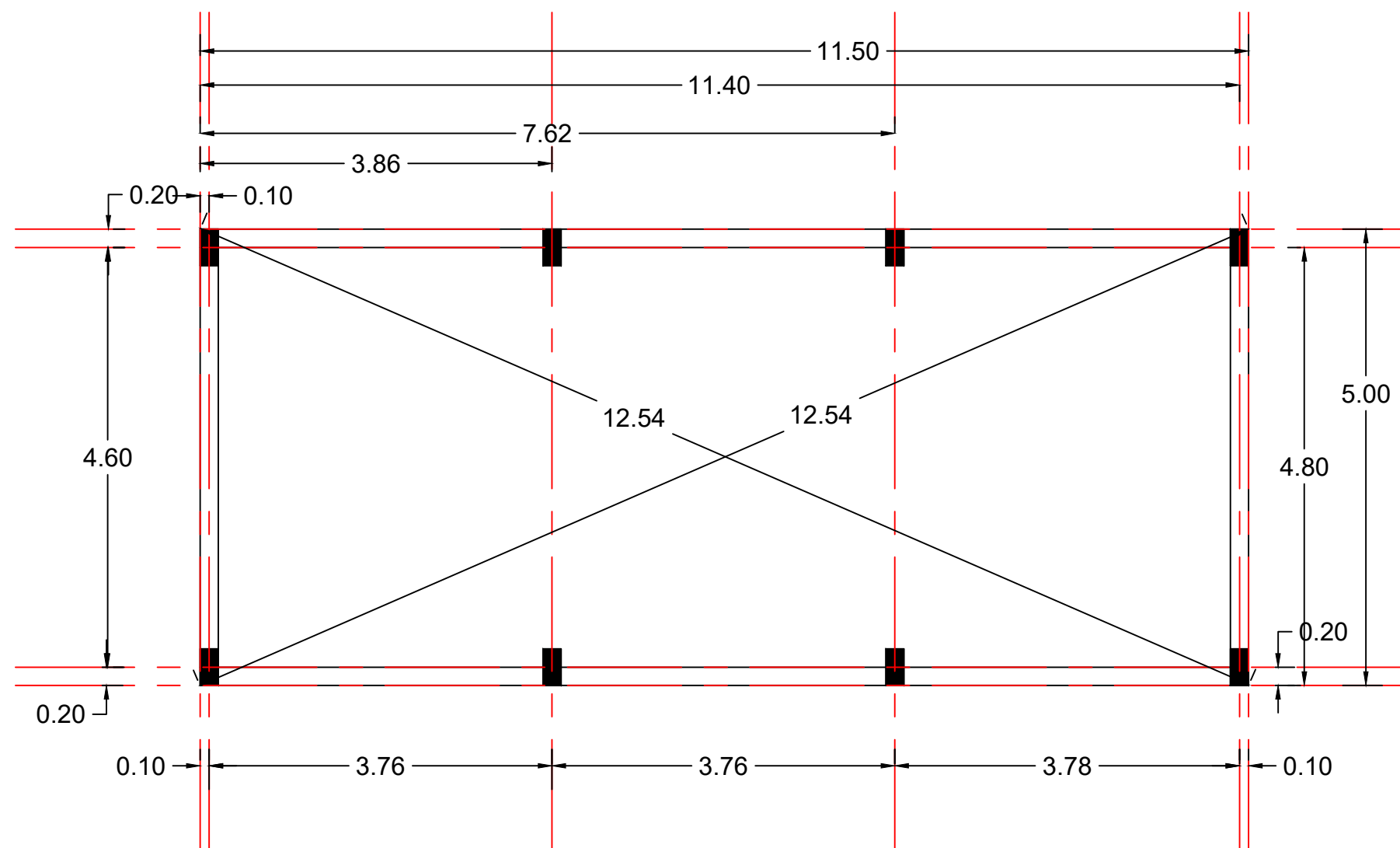
**"SITE PLAN OF PROPOSED
WINDROW COMPIST PLANT & EXISTING SLRM CENTRE "
AT NAGAR PANCHAYAT AMDI, DHAMTARI (C.G.)**

WINDROW COMPOST	PILLIWAR & ASSOCIATES			
	ENGINEERS, ARCHITECTS, PLANNERS, GIS-CONSULTANTS & REGD. VALUERS. 25-SOUTH AVENUE, CHOUBEY COLONY, RAIPUR (C.G.) PHONE No. - 0771-2255748, 4036748 CELL No. 0-94252-09760 E-MAIL: manishpilliwari@yahoo.com			
NOTE ALL DIM. ARE IN M.	DWG PATH			
	CLIENT	NAGAR PANCHAYAT, AMDI (C.G.)		
REVISION	PROJECT	MUNICIPAL SOLID WASTE MANAGEMENT, UNDER 2.0		
DESIGNED BY	DRAWN BY	CHECKED BY	DATE	
MANISH PILLIWAR	NITISH DEWANGAN	MANISH PILLIWAR	13/02/2026	


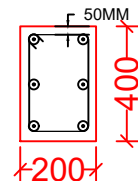


**"SITE PLAN OF PROPOSED
WINDROW COMPIST PLANT & EXISTING SLRM CENTRE "
AT NAGAR PANCHAYAT AMDI, DHAMTARI (C.G.)**

STORAGE ROOM	PILLIWAR & ASSOCIATES		
	ENGINEERS, ARCHITECTS, PLANNERS, GIS-CONSULTANTS & REGD. VALUERS, 25-SOUTH AVENUE, CHOUBEY COLONY, RAIPUR (C.G.) PHONE No. - 0771-2255748, 4036748 CELL No. 0-94252-09760 E-MAIL: manishpiliwar@yahoo.com		
	NOTE ALL DIM. ARE IN M.	DWG PATH	
		CLIENT	NAGAR PANCHAYAT, AMDI (C.G.)
REVISION	PROJECT	MUNICIPAL SOLID WASTE MANAGEMENT, UNDER 2.0	
DESIGNED BY	DRAWN BY	CHECKED BY	DATE
MANISH PILLIWAR	NITISH DEWANGAN	MANISH PILLIWAR	13/02/2026

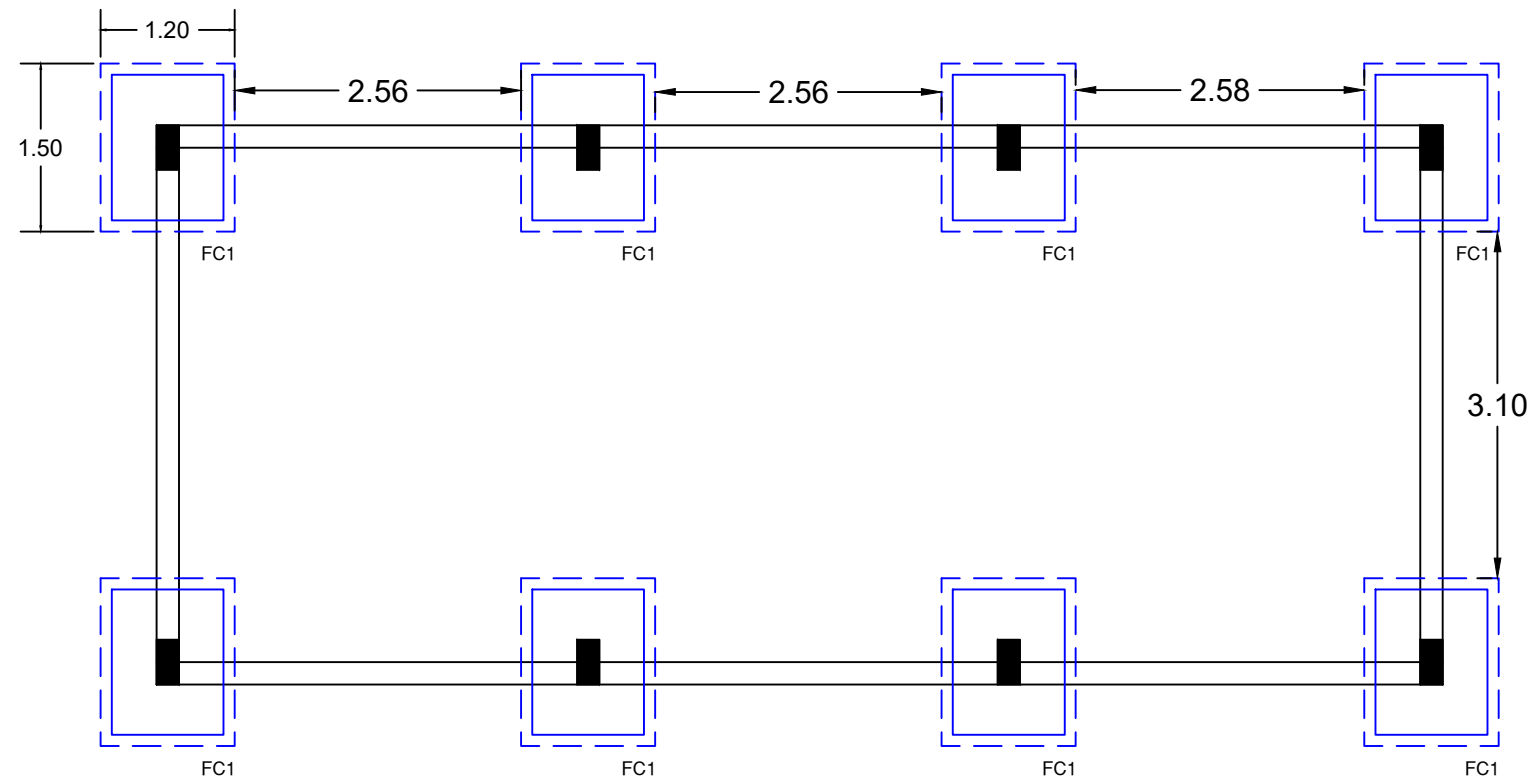


CENTRE LINE PLAN

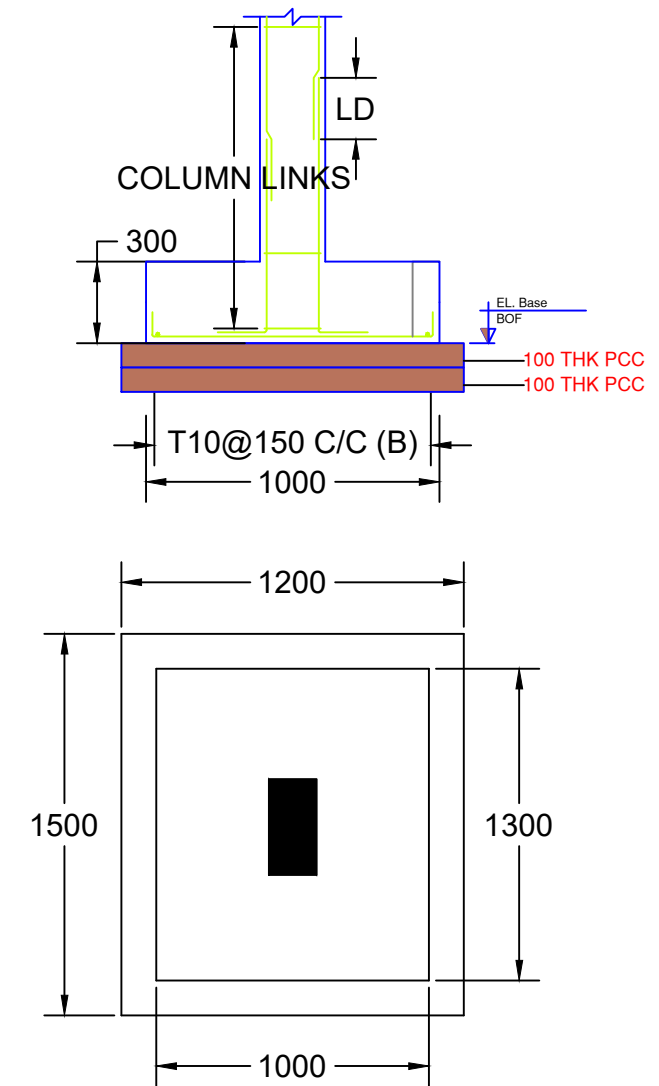
UP TO GROUND FLOOR	M20 : Fe500 
	LINKS
	T8@150c/c
	
	6-T12
COLUMN SIZE	200X400
COLUMN MARKED	C1

**"SITE PLAN OF PROPOSED
WINDROW COMPIST PLANT & EXISTING SLRM CENTRE "
AT NAGAR PANCHAYAT AMDI, DHAMTARI (C.G.)**

STORAGE ROOM	PILLIWAR & ASSOCIATES			
	ENGINEERS, ARCHITECTS, PLANNERS, GIS-CONSULTANTS & REGD. VALUERS. 25-SOUTH AVENUE, CHOUBEY COLONY, RAIPUR (C.G.) PHONE No. : 0771-2255748, 4036748 CELL No. 0-94252-09760 E-MAIL: manishpilliwari@yahoo.com			
NOTE ALL DIM. ARE IN M.	DWG PATH			
	CLIENT	NAGAR PANCHAYAT, AMDI (C.G.)		
REVISION	PROJECT	MUNICIPAL SOLID WASTE MANAGEMENT, UNDER 2.0		
	DESIGNED BY	DRAWN BY	CHECKED BY	DATE
	MANISH PILLIWAR	NITISH DEWANGAN	MANISH PILLIWAR	13/02/2026



FOOTING DETAILS



COLUMN FOOTING SECTION 1-1
DETAIL OF FOOTING FC1

FOOTING SCHEDULE (M20:Fe500)

FOOTING NUMBERS	EXCAVATION SIZE			FOOTING DIMENSION			FOOTING REINFORCEMENT			
	L	B	D/H	L	B	D	BOTTOM		TOP	
							ALONG B	ALONG L	ALONG B	ALONG L
FC1	1.20	1.50	1.50	1.00	1.30	300	T10@150 C/C	T10@150 C/C	--	--

"SITE PLAN OF PROPOSED WINDROW COMPIST PLANT & EXISTING SLRM CENTRE " AT NAGAR PANCHAYAT AMDI, DHAMTARI (C.G.)

STORAGE ROOM	PILLIWAR & ASSOCIATES			
	ENGINEERS, ARCHITECTS, PLANNERS, GIS-CONSULTANTS & REGD. VALUERS, 25-SOUTH AVENUE, CHOUBEY COLONY, RAIPUR (C.G.) PHONE No. - 0771-2255748, 4036748 CELL No. 0-94252-09760 E-MAIL: manishpilliwat@yahoo.com			
NOTE ALL DIM. ARE IN M.	DWG PATH			
	CLIENT	NAGAR PANCHAYAT, AMDI (C.G.)		
REVISION	PROJECT	MUNICIPAL SOLID WASTE MANAGEMENT, UNDER 2.0		
	DESIGNED BY	DRAWN BY	CHECKED BY	DATE
	MANISH PILLIWAR	NITISH DEWANGAN	MANISH PILLIWAR	13/02/2026

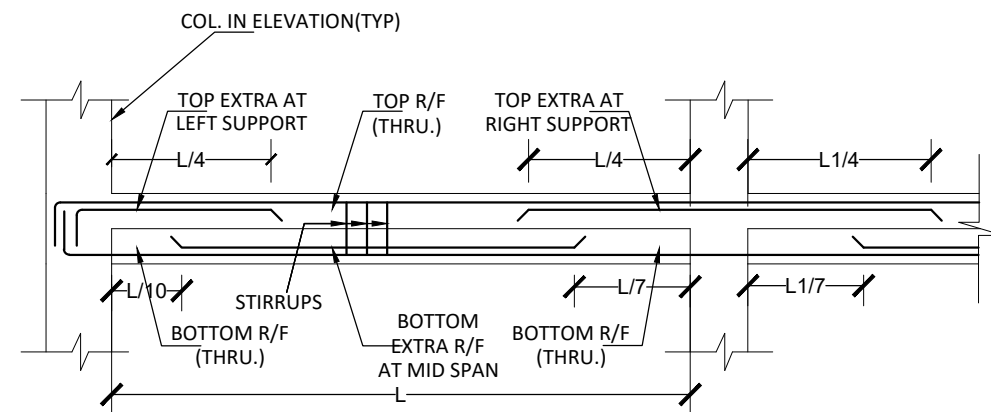
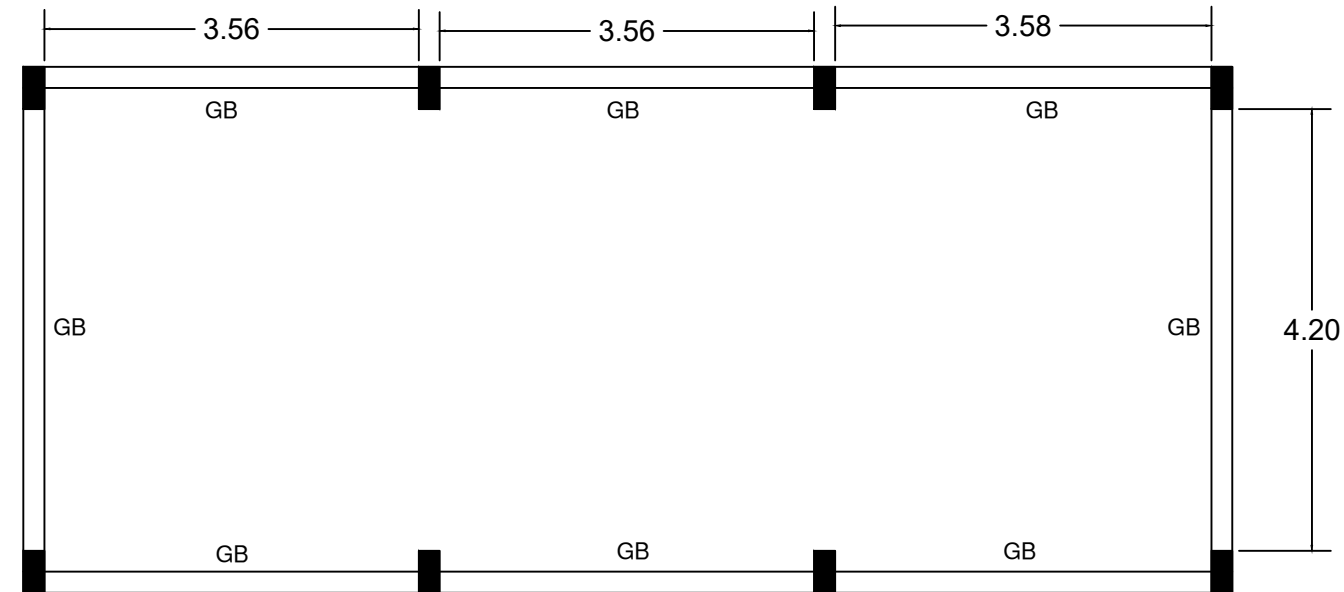


FIG.2:TYPICAL DETAIL OF BEAM

BEAM SCHEDULE (M20:Fe500) (TYPICAL GROUND BEAM DETAILS) SEE FIG.-2

BEAM NUMBERS	SIZE		BOTTOM REINFORCEMENT		TOP REINFORCEMENT			SHEAR STIRRUPS		
	B	D	BOTTOM R/F (THRU.)	BOTTOM R/F EXTRA AT MID SPAN	TOP R/F (THRU.)	TOP EXTRA R/F AT LEFT SUPPORT	TOP EXTRA R/F AT RIGHT SUPPORT	LEFT	MID SPAN	RIGHT
GB	200	300	2-T12	1-T12	2-T12	1-T12	1-T12	2L-T8@150	2L-T8@150	2L-T8@150

GROUND BEAM DETAILS

**"SITE PLAN OF PROPOSED
WINDROW COMPIST PLANT & EXISTING SLRM CENTRE "
AT NAGAR PANCHAYAT AMDI, DHAMTARI (C.G.)**

STORAGE ROOM	PILLIWAR & ASSOCIATES			
	ENGINEERS, ARCHITECTS, PLANNERS, GIS-CONSULTANTS & REGD. VALUERS. 25-SOUTH AVENUE, CHOUBEY COLONY, RAIPUR (C.G.) PHONE No. - 0771-2255748, 4036748 CELL No. 0-94252-09760 E-MAIL: manishpiliwar@yahoo.com			
NOTE ALL DIM. ARE IN M.	DWG PATH			
	CLIENT	NAGAR PANCHAYAT, AMDI (C.G.)		
REVISION	PROJECT	MUNICIPAL SOLID WASTE MANAGEMENT, UNDER 2.0		
DESIGNED BY	DRAWN BY	CHECKED BY	DATE	
MANISH PILLIWAR	NITISH DEWANGAN	MANISH PILLIWAR	13/02/2026	

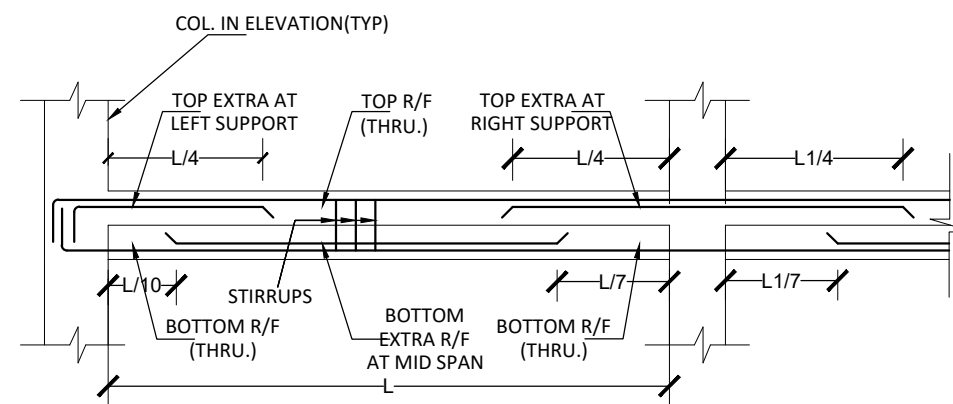
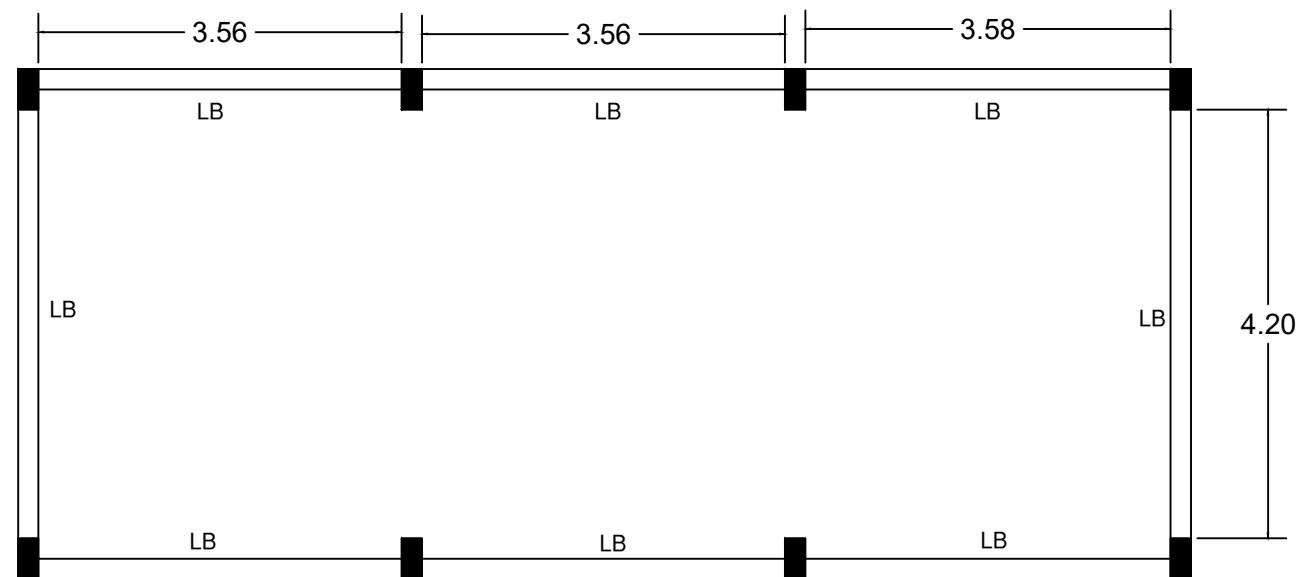


FIG.2: TYPICAL DETAIL OF BEAM

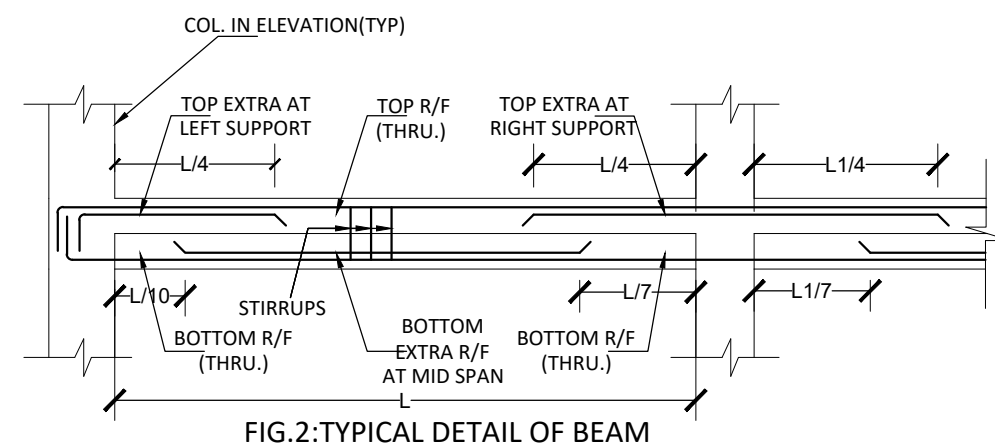
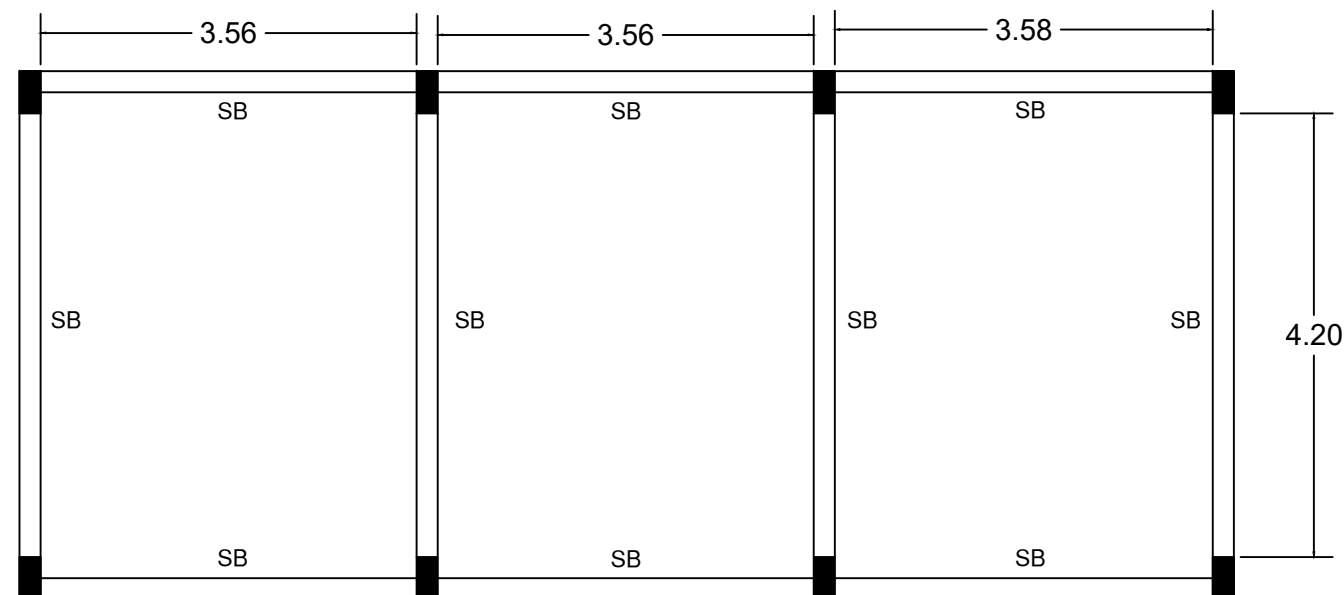
BEAM SCHEDULE (M20:Fe500) (TYPICAL LINTEL BEAM DETAILS) SEE FIG.-2

BEAM NUMBERS	SIZE		BOTTOM REINFORCEMENT		TOP REINFORCEMENT			SHEAR STIRRUPS		
	B	D	BOTTOM R/F (THRU.)	BOTTOM R/F EXTRA AT MID SPAN	TOP R/F (THRU.)	TOP EXTRA R/F AT LEFT SUPPORT	TOP EXTRA R/F AT RIGHT SUPPORT	LEFT	MID SPAN	RIGHT
LB	0.20	0.15	2-T12	-	2-T12	-	-	2L-T8@150	2L-T8@150	2L-T8@150

LINTEL BEAM DETAILS

**"SITE PLAN OF PROPOSED
WINDROW COMPOST PLANT & EXISTING SLRM CENTRE "
AT NAGAR PANCHAYAT AMDI, DHAMTARI (C.G.)**

PILLIWAR & ASSOCIATES					
<u>STORAGE</u> <u>ROOM</u>	ENGINEERS, ARCHITECTS, PLANNERS, GIS-CONSULTANTS & REGD. VALUERS, 25-SOUTH AVENUE, CHOUBEY COLONY, RAIPUR (C.G.) PHONE No. - 0771-2255748, 4036748 CELL No. 0-94252-09760 E-MAIL: manishpiliwar@yahoo.com				
	NOTE ALL DIM. ARE IN M.	DWG PATH			
	CLIENT	NAGAR PANCHAYAT, AMDI (C.G.)			
	REVISION	PROJECT	MUNICIPAL SOLID WASTE MANAGEMENT, UNDER 2.0		
DESIGNED BY		DRAWN BY		CHECKED BY	DATE
MANISH PILLIWAR		NITISH DEWANGAN		MANISH PILLIWAR	13/02/2026



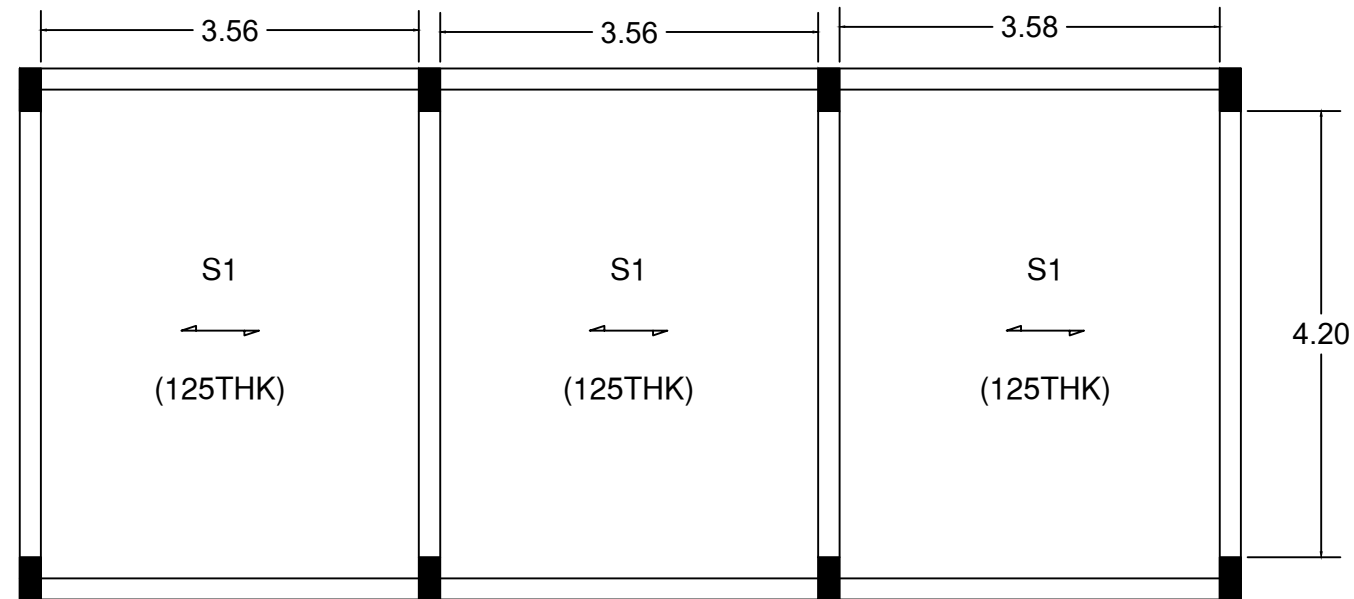
BEAM SCHEDULE (M20:Fe500) (TYPICAL SLAB BEAM DETAILS) SEE FIG.-2

BEAM NUMBERS	SIZE		BOTTOM REINFORCEMENT		TOP REINFORCEMENT			SHEAR STIRRUPS		
	B	D	BOTTOM R/F (THRU.)	BOTTOM R/F EXTRA AT MID SPAN	TOP R/F (THRU.)	TOP EXTRA R/F AT LEFT SUPPORT	TOP EXTRA R/F AT RIGHT SUPPORT	LEFT	MID SPAN	RIGHT
SB	0.20	0.40	2-T16	1-T16	2-T16	1-T12	2-T12	2L-T8@150	2L-T8@150	2L-T8@150

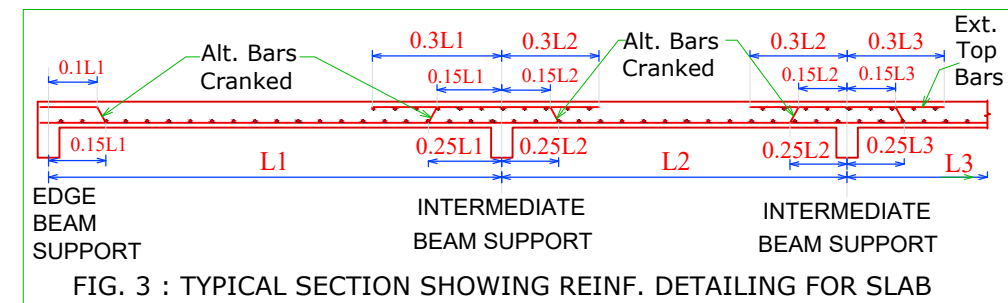
SLAB BEAM DETAILS

**"SITE PLAN OF PROPOSED
WINDROW COMPIST PLANT & EXISTING SLRM CENTRE "
AT NAGAR PANCHAYAT AMDI, DHAMTARI (C.G.)**

STORAGE ROOM		PILLIWAR & ASSOCIATES			
		ENGINEERS, ARCHITECTS, PLANNERS, GIS-CONSULTANTS & REGD. VALUERS, 25-SOUTH AVENUE, CHOUBEY COLONY, RAIPUR (C.G.) PHONE No. - 0771-2255748, 4036748 CELL No. 0-94252-09760 E-MAIL: manishpiliwar@yahoo.com			
NOTE ALL DIM. ARE IN M.	DWG PATH	NAGAR PANCHAYAT, AMDI (C.G.)			
	CLIENT				
REVISION	PROJECT	MUNICIPAL SOLID WASTE MANAGEMENT, UNDER 2.0			
	DESIGNED BY	DRAWN BY	CHECKED BY	DATE	
MANISH PILLIWAR	NITISH DEWANGAN	MANISH PILLIWAR	13/02/2026		



NOTE : [1] IN SLABS, BENT UP BARS (OR EXTRA TOP BARS) SHALL BE EXTENDED UP TO 0.3L IN ADJACENT SPAN OVER CONTINUOUS SUPPORT.
 [2] AT MID-SPAN LOCATIONS, BARS NEAR THE BOTTOM FACE SHOULD BE PLACED SUCH THAT THE BARS ALONG SHORT SPAN ARE BELOW THE BARS ALONG LONG SPAN.
 [3] AT BEAM SUPPORT LOCATIONS, BARS NEAR THE TOP FACE SHOULD BE PLACED SUCH THAT THE BARS ALONG SHORT SPAN ARE ABOVE THE BARS ALONG LONG SPAN.
 [4] PROVIDE TORSION REINFORCEMENT, AS PER I.S.CODAL PROVISION (IS:456:2000).
 [5] GRADE OF CONCRETE : M20; GRADE OF STEEL : Fe500.



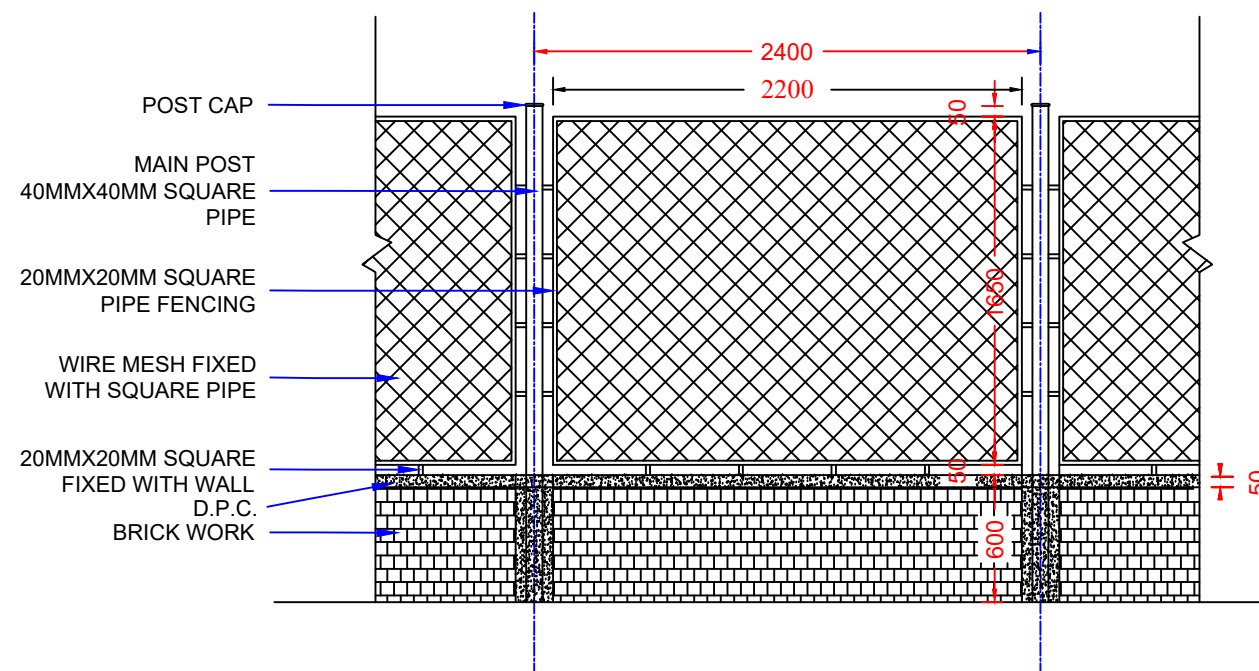
DETAILS OF TERRACE FLOOR SLAB REINFORCEMENT
 (SEE FIG.-3 FOR POSITIONING AND DETAILING OF SLAB REINFORCEMENT)

NAME OF SLAB	DEPTH OF SLAB IN mm	REINFORCEMENT ALONG SHORT DIRECTION		REINFORCEMENT ALONG LONG DIRECTION		DISTRIBUTION REINFORCEMENT	SLAB TYPE
		AT MID SPAN NEAR BOTTOM FACE	OVER BEAM SUPPORT NEAR TOP FACE	AT MID SPAN NEAR BOTTOM FACE	OVER BEAM SUPPORT NEAR TOP FACE		
S1	125mm	10mm # @ 150mm C/C	10 mm # @ 150mm C/C		-	8 mm # @ 150mm C/C	1-WAY

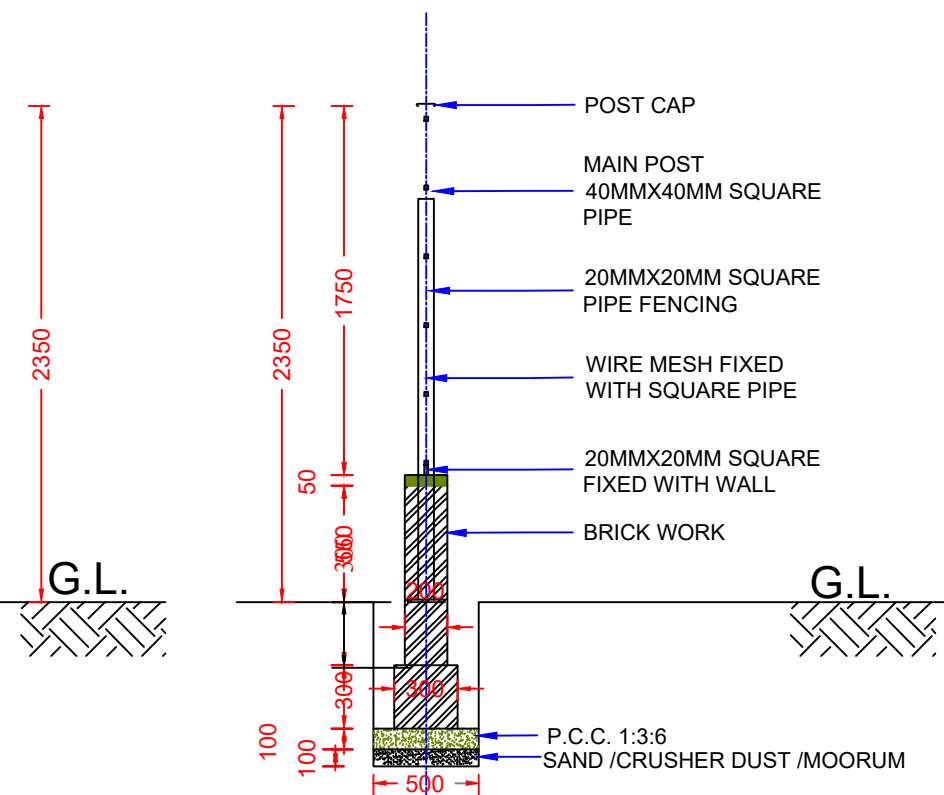
SLAB DETAILS

**"SITE PLAN OF PROPOSED
 WINDROW COMPIST PLANT & EXISTING SLRM CENTRE "
 AT NAGAR PANCHAYAT AMDI, DHAMTARI (C.G.)**

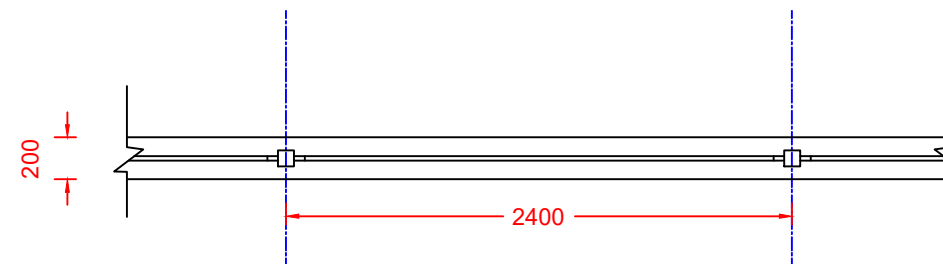
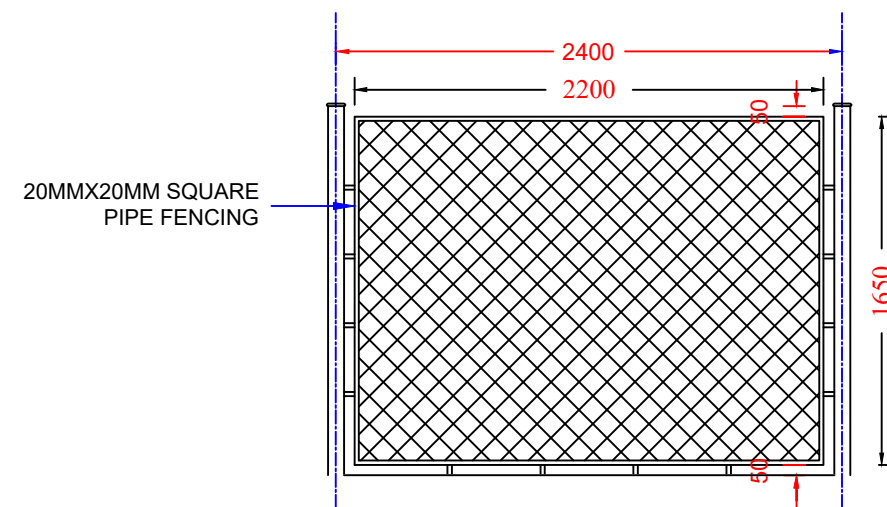
STORAGE ROOM	PILLIWAR & ASSOCIATES			
	ENGINEERS, ARCHITECTS, PLANNERS, GIS-CONSULTANTS & REGD. VALUERS. 25-SOUTH AVENUE, CHOUBEY COLONY, RAIPUR (C.G.) PHONE No. - 0771-2255748, 4036748 CELL No. 0-94252-09760 E-MAIL: manishpilliwari@yahoo.com			
NOTE ALL DIM. ARE IN M.	DWG PATH			
	CLIENT	NAGAR PANCHAYAT, AMDI (C.G.)		
REVISION	PROJECT	MUNICIPAL SOLID WASTE MANAGEMENT, UNDER 2.0		
	DESIGNED BY	DRAWN BY	CHECKED BY	DATE
	MANISH PILLIWAR	NITISH DEWANGAN	MANISH PILLIWAR	13/02/2026



TYPICAL ELEVATION OF FENCING



CROSS SECTION OF CHAIN LINK FENCING

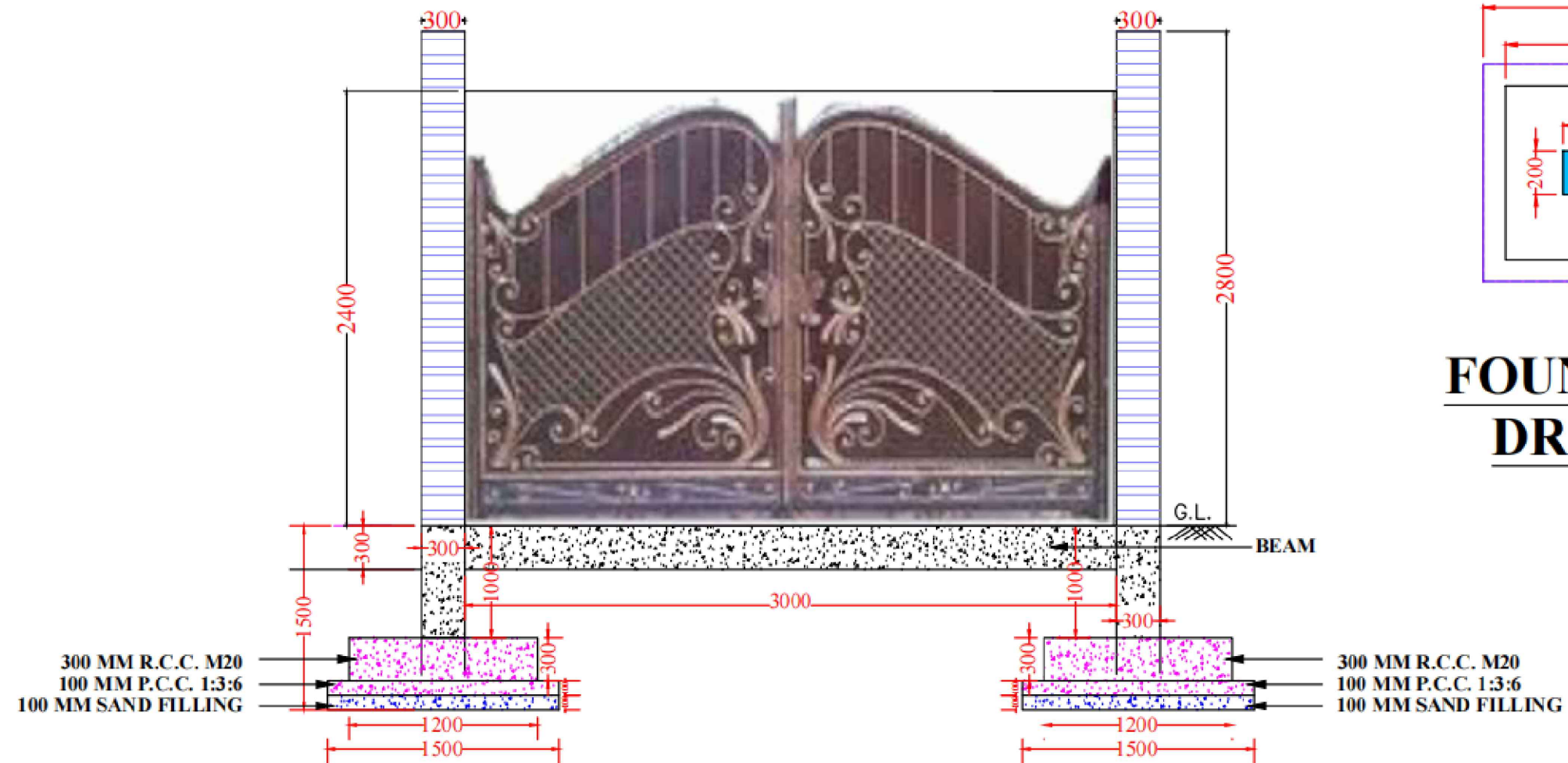


TYPICAL PLAN OF FENCING

BOUNDARY FENCING

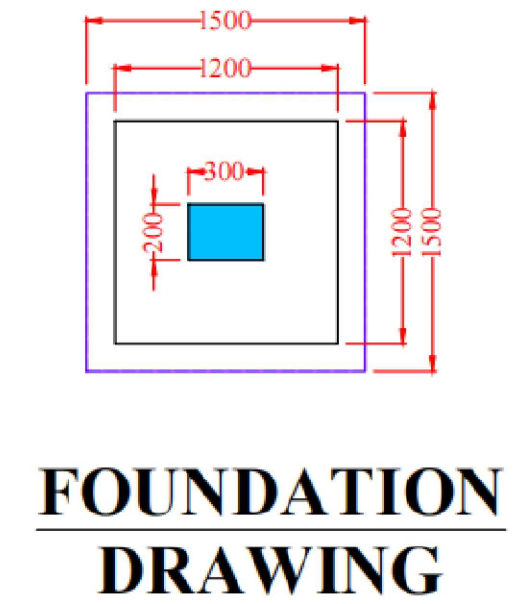
**"SITE PLAN OF PROPOSED
WINDROW COMPOST PLANT & EXISTING SLRM CENTRE "
AT NAGAR PANCHAYAT AMDI, DHAMTARI (C.G.)**

BOUNDARY FENCING	PILLIWAR & ASSOCIATES		
	ENGINEERS, ARCHITECTS, PLANNERS, GIS-CONSULTANTS & REGD. VALUERS, 25-SOUTH AVENUE, CHOUBEY COLONY, RAIPUR (C.G.) PHONE No. - 0771-2255748, 4036748 CELL No. 0-94252-09760 E-MAIL: manishpilliwari@yahoo.com		
	NOTE ALL DIM. ARE IN M.	DWG PATH	
	CLIENT	NAGAR PANCHAYAT, AMDI (C.G.)	
REVISION	PROJECT	MUNICIPAL SOLID WASTE MANAGEMENT, UNDER 2.0	
DESIGNED BY	DRAWN BY	CHECKED BY	DATE
MANISH PILLIWAR	NITISH DEWANGAN	MANISH PILLIWAR	13/02/2026



ELEVATION

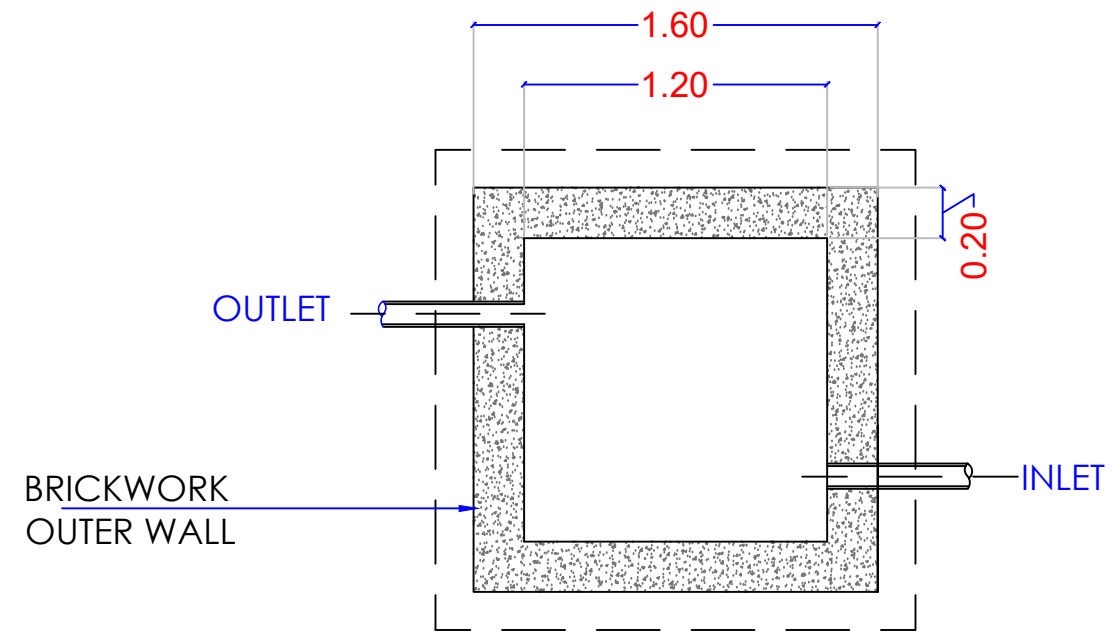
ENTRANCE GATE



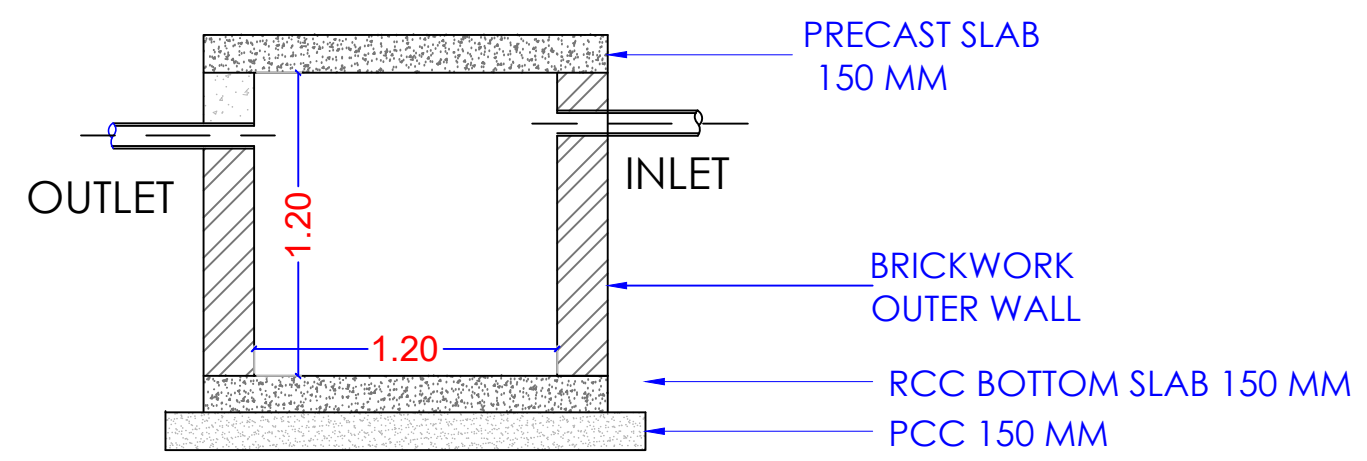
**FOUNDATION
DRAWING**

**"SITE PLAN OF PROPOSED
WINDROW COMPOST PLANT & EXISTING SLRM CENTRE "
AT NAGAR PANCHAYAT AMDI, DHAMTARI (C.G.)**

GATE	PILLIWAR & ASSOCIATES		
	ENGINEERS, ARCHITECTS, PLANNERS, GIS-CONSULTANTS & REGD. VALUERS, 25-SOUTH AVENUE, CHOUBEY COLONY, RAIPUR (C.G.) PHONE No. : 0771-2255748, 4036748 CELL No. 0-94252-09760 E-MAIL: manishpiliwar@yahoo.com		
	NOTE ALL DIM. ARE IN M.	DWG PATH	
	CLIENT	NAGAR PANCHAYAT, AMDI (C.G.)	
REVISION	PROJECT	MUNICIPAL SOLID WASTE MANAGEMENT, UNDER 2.0	
DESIGNED BY	DRAWN BY	CHECKED BY	DATE
MANISH PILLIWAR	NITISH DEWANGAN	MANISH PILLIWAR	12/01/2026



LEACHATE TANK PLAN
1.20 X 1.20 X 1.20 M



SECTION A-A'

**"SITE PLAN OF PROPOSED
WINDROW COMPIST PLANT & EXISTING SLRM CENTRE "
AT NAGAR PANCHAYAT AMDI, DHAMTARI (C.G.)**

LEACHATE TANK		PILLIWAR & ASSOCIATES			
		ENGINEERS, ARCHITECTS, PLANNERS, GIS-CONSULTANTS & REGD. VALUERS. 25-SOUTH AVENUE, CHOUBEY COLONY, RAIPUR (C.G.) PHONE No. - 0771-2255748, 4036748 CELL No. 0-94252-09760 E-MAIL: manishpiliwar@yahoo.com			
NOTE ALL DIM. ARE IN M.	DWG PATH				
	CLIENT				NAGAR PANCHAYAT, AMDI (C.G.)
REVISION	PROJECT	MUNICIPAL SOLID WASTE MANAGEMENT, UNDER 2.0			
	DESIGNED BY		DRAWN BY	CHECKED BY	DATE
MANISH PILLIWAR		NITISH DEWANGAN		MANISH PILLIWAR	13/02/2026